

Silver Star Provincial Park

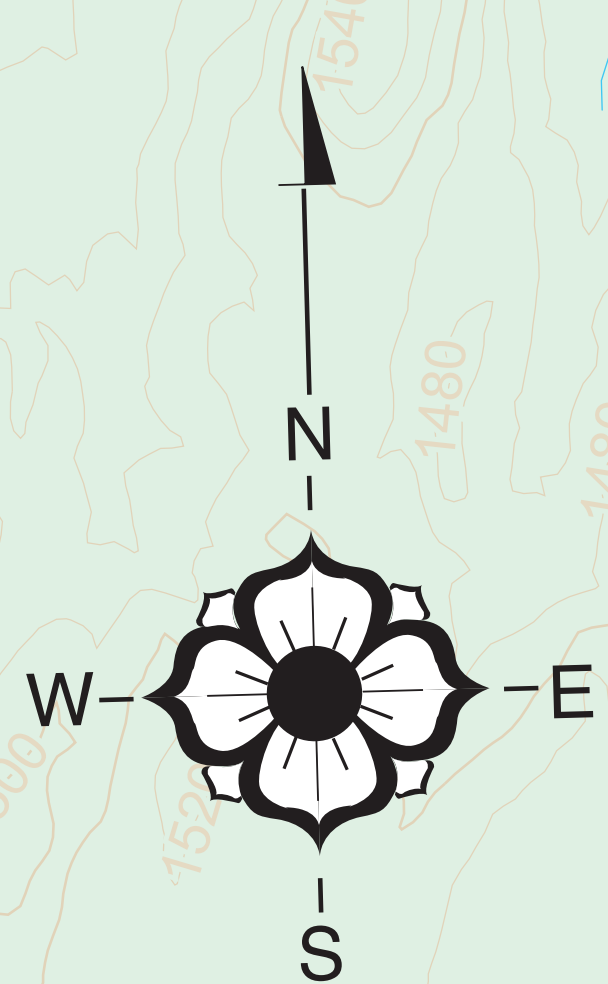
WARNING

Snow Machine, Cross Country Ski, and Snowshoe Trails intersect in some areas, USE CAUTION! Use of maintained trails is restricted to snow machines and cross country skiers holding a valid pass.

Legend

- Parking
- Shelter
- Downhill Ski Area
- Cross Country Skiing
- Snowshoeing
- Snow Machine Area
- Food
- Tourist Accommodations
- Viewpoint
- Provincial Park Boundary
- Cross Country Skiing Area
- Multi-use Winter Recreation Area (trails separated by use)
- Snow Machine Area (Restricted to designated trails only, while within the Provincial Park)
- Snow Machine Trails
- Cross Country Ski Trail
- Snowshoe Trail
- Boundary of Snow Machine Area
- Warning - Snow Machine / Cross Country Ski Trail Crossing
- Easy / Beginner Trail Difficulty
- Intermediate Trail Difficulty
- Advanced Trail Difficulty

SILVER STAR PROVINCIAL PARK



Silver Star Lakes

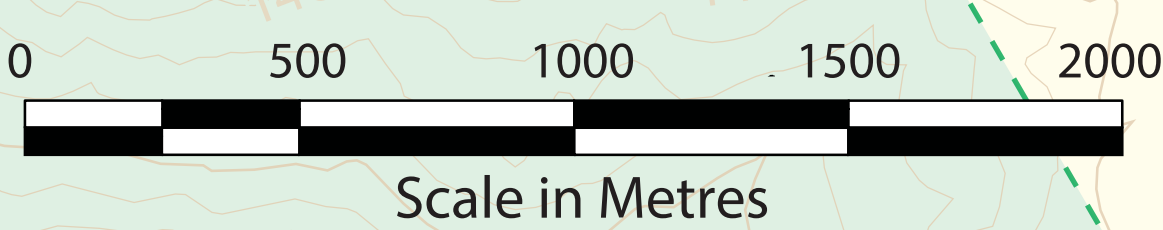
Sovereign Lake Nordic Centre

Area enlarged at right

Silver Star Mountain Resort

Silver Star Road

To Vernon



Proud Partners / Contributions made by



- B-Line: 0.3km (one way)
- Cathedral Loop: 4.3km (loop length)
- Rock is the New Berm: 0.8km(one way)
- Perimeter Loop: 3.7km (loop length)
- Finn-Tastic: 1.8km (one way)
- Moose : 1.4km (one way)
- Tower Loop: 3.6km (loop length)
- Diagonal Alley: 1.8km (one way)
- Fast Track: 0.4km (one way)
- Pink Lady: 0.8km (one way)

Snowshoe/Non-motorized Trails

WARNING
Snow Machine / Cross Country Ski Trail Crossing

